

**CREATING A BRIGTHER  
FUTURE TOGETHER**



## **COMPANY PROFILE**



**PROJECT MANAGEMENT CONSULTANT**

**ARCHITECT, ENGINEERS & PLANNERS**

## CEO MESSAGE

It has always been my passion to establish a company with precise technical expertise, commitment to deliver and passion for design. The idea is to shore up the market gap by providing excellent quality of services/products in the industry through the use of premium quality of goods in a cost-effective manner.

With our team of experts, we have entered the industry with a purpose to provide customer satisfaction and value addition to our clients.

Our Project Management & Engineering expertise offers clients the unique ability to optimize workflow and maximize profits by providing unique, cost-efficient and long-term solutions.

**Mr. Hafiz Sharjeel Aslam Alvi**  
**P.E, B.E(Civil), M.E(Civil), PMP**  
**Founder & CEO**

**GLAXCON, PAKISTAN**

## ABOUT GLAXCON

GLAXCON has been formed with that an objective of becoming the fastest growing and most esteemed development companies in Pakistan. We are equipped with professionals having diverse experience in executing large and complex Infrastructure Design and Construction projects. We are here to deliver excellent quality projects in timely manner with durability.

Our team is equipped with specialization in the sectors of Buildings, Highways, Motorways, Power & Energy, Airports, Oil and Gas etc. GLAXCON is in charge for landmark projects that have given a unique age to the construction world. We take each step and project with aim to inspire the lives of the people around us. The expertise and commitment of our team empowers our company.

Our guiding principles are honesty & professionalism resulting in designs which are both economical and efficient simultaneously.



DREAM



DESIGN



BUILD

”

## Vision

Our vision is to provide the honest construction services nationwide. We strive for integrity and excellence by means of constantly improving our services. By constantly maintaining our dedication to the highest moral principles, we try to develop eco-friendlier solutions for our work and services. Our vision is to enhance the internal culture, promote a culture of professionalism and corporate social responsibility.



# WHY Us

## ▶ **We build Trust, long-term**

The Transportation & Structural Design Consultancy branding revolves around Quality, Trust & Long-Term Relationships.

## ▶ **Wide design Portfolio**

From Buildings to highways, Bridges, Underpass, Jetties, Towers, Tanks, Hydraulic Structure & Energy Sector (Telecom and Oil Gas). We have a wide design portfolio both Sector-Wise and Material-Wise (Steel & RCC)

## ▶ **Value Engineering**

Value Engineering is a conscious and explicit set of disciplined procedures designed to seek out optimum value for both initial and long-term investment. Glaxcon, with its rich and diversified expertise in design & construction services could suggest effective value engineering by proposing reasonable and innovative alternatives that are both cost efficient and functionally better.

# WHAT DO WE DO



## **Architecture & Interior Design**

Shaping Ideas into reality



## **Structural Analysis & Design**

RCC & Steel Structural Design & Analysis



## **Transportation Design**

Geometric Design, Pavements & Traffic Engineering



## **Master Planning**

Neighborhoods, Housing & Industrial Schemes



## **Hydraulic Studies & Design**

3D Views, Elevations & Interior Views



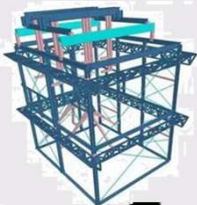
## **PC-I, Feasibilities & Technical Studies**

PC-I, Tender Documents, Project Specifications



## **Drafting & Detailing Works**

Fabrication Drawings for Steel & IFC Drawings for Buildings & Bridges



## **Design Reviews & Value Engineering**

All type of Structures like Buildings, Bridges, Steel structures



## **Project Management & Construction Supervision**

Connection Design for Steel & PEMB



## **Energy (OIL & GAS, Telecom Network Industry) Design**

Design for Steel & PEMB & Civil works



## **Quantity Surveying & Estimation**

Quantifying, Estimation & Manhours calculation

# SECTORS WE SERVE

## MARINE WORKS

- ▶ Jetty, Piers & Quay Walls



- ▶ Onshore Structures



- ▶ Marina & Sailing Clubs



- ▶ Dockyard Pavements

- ▶ Shore & Slope Protection

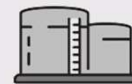


## HYDRAULIC STRUCTURES

- ▶ Storage Tanks & Water Towers



- ▶ Drains, Nalas, Siphons, Weirs, Open Channels



## WET UTILITY SYSTEMS

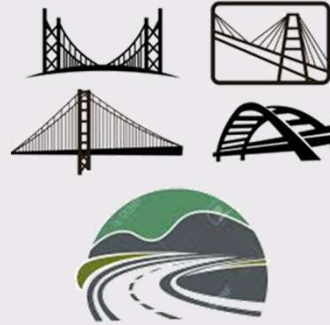
- ▶ Water Supply & Sewerage Networks
- ▶ Storm Water Drainage Systems

# SECTORS WE SERVE

## INFRASTRUCTURE

### ▶ Road & Highways

- ▣ Geometric Design
- ▣ Pavement Design
- ▣ Intersection Design



### ▶ Bridges, Flyovers & Underpass

### ▶ Pedestrian Bridges, Aqueducts & Cattle Crossings

### ▶ Box & Pipe Culverts; Retaining Walls

### ▶ Avalanche Protection Structures

### ▶ Causeways

## TRAFFIC ENGINEERING

### ▶ Traffic flow Analysis & Modeling

### ▶ Traffic Signal Design

### ▶ Traffic Impact Assessment

### ▶ Highway Signs & Markings design

### ▶ Traffic Management Studies





# SECTORS WE SERVE

## BUILDINGS

- ▶ Residential
- ▶ Commercial / Mix Use
- ▶ Offices
- ▶ Educational (Schools/University)
- ▶ Healthcare
- ▶ Government/ Institutional
- ▶ Industrial
- ▶ Warehouse & Cold Storage
- ▶ Agricultural Sheds & Silos
- ▶ PEB Buildings
- ▶ Water Towers/ Tanks



# SECTORS WE SERVE

## OIL & GAS WORKS

- ▶ Design of Steel Structures such as Pipe Racks, Operating Platforms, Equipment Steel Shed, Support Structures, Steel Shelters, Warehouse Portal Frames, Stanchions, Manifolds etc.
- ▶ Design of Foundations for Storage Tanks, Vertical Columns, Heat Exchangers, Vertical\Horizontal Drums, Pumps, Package Equipment's, Pipe Supports, Pipeline Thrust Anchor Blocks & Pipe Sleepers,
- ▶ Design of Dynamic Foundations for Equipment's with Vibrations like; Compressors, Turbines, Pumps, etc.
- ▶ Design of Electrical substation building with blast resistant wall, transformer foundation, fire wall etc.

# SECTORS WE SERVE

## OIL & GAS WORKS

- ▶ Design of Grading/Paving/Earthworks for Oil well, Gas well, Remote Manifolds, Gas Compression Plants
- ▶ Design of Water & Earth Retaining Structures like: Pits, Retaining walls, Dike walls etc.
- ▶ Layout & Design of Oily Water, Storm Water & Sanitary Sewerage Network
- ▶ Preparation of Underground Facility Layout & Detail Drawings,
- ▶ E&I Cable Trenches & Duct Bank Details, Boundary Wall, Security Fence & Gate Details, Layout & Design of Plant/Facility Roads with RCC Box Culverts,- Civil/Structures BOQs

# SOFTWARE WE USE



## TRANSPORTATION DESIGN

▶ CIVIL 3D



▶ MX ROAD



▶ GEPAK V8i

Traffic Plans: Signing & Pavement Marking in GEOPAK V8i

▶ ARC GIS



▶ SYNCHRO 4D



SIDRA INTERSECTION 9

▶ SIDRA INTERSECTION DESIGN

▶ PTV VISTRO



## HYDRAULICS & WATER SUPPLY

▶ HEC RAS

▶ EPA NET

EPANET

▶ HEC HMS

▶ HAMMER



▶ FLOW MASTER



▶ CULVERT



MASTER

## PROJECT & CONSTRUCTION MANAGEMENT

▶ PRIMA VERA



▶ MS PROJECT



# SOFTWARE WE USE



## BUILDING ANALYSIS & DESIGN

▶ ETABS



▶ SAFE



▶ SAP2000



▶ SP



COLUMN

▶ CSI COL



▶ PROKON



▶ GRASP

## BRIDGE ANALYSIS & DESIGN

▶ CSI BRIDGE



▶ MIDAS CIVIL

MIDAS CIVIL



▶ LEAP

Bentley  
LEAP Bridge Enterprise V8i

BRIDGE

## DRAFTING & DETAILING

▶ AUTOCAD



▶ MICROSTATION

MicroStation V8i  
BENTLEY



# CONSULTANCY PROJECTS (PAK)

- ▶ Consultancy services of Defense Project Pakistan existing Floating Jetties Structure & Bridge assessment and rehabilitation / Re-strengthen design Works at Baluchistan Zone(1 No) & (2 No's)
- ▶ Design consultancy of **60 m Guide Tower**.
- ▶ Design consultancy services for **Observation Post Building**
- ▶ Design Modifications (Jetty and Shore Protection wall) at Sholani Goth (Fish Harbor) – Thatta
- ▶ Up gradation of (Mini Harbour) Jetty at Keti Bandar- Thatta
- ▶ Preliminary design Proposal For Light house layout at Gwader Port
- ▶ Preliminary design for SLIPWAY at China Depot, Rehri Goth, Ibrahim Hyderi, Karachi
- ▶ Preliminary design Proposal for Additional Fishing Jetty at Ibrahim Hyderi, Karachi

# CONSULTANCY PROJECTS (PAK)

- ▶ Joint venture with **INFO PARADIGM**, a **US based firm** for Infrastructure Engineering design, Review and digitizing projects.
- ▶ Town planning of **NOOR AL BARKA** Private Housing Scheme
- ▶ Consultancy Services for Site Development and Drainage Works for **MADRAS HOUSING**
- ▶ Estimation for Road Works for **Madras Housing Society**
- ▶ B+G+M+12 Story building structure with multi level parking.
- ▶ Town Planning of 100-acre Land area.
- ▶ Design & supervision of Textile factory, G+4 & its dyeing unit (plot area 1 acre), Hub river road Karachi
- ▶ 10 No's Oil Storage Tank Ring Wall Foundations of 3-25 m dia at various locations in Sindh & Punjab
- ▶ Gas pipeline crossing bridge at Port Qasim canal, 50 ft. span
- ▶ Truss bridge and inspection bridge (70 ft. span)
- ▶ Design of Civil Works for Toyota Motor Showroom Building, Gilgit
- ▶ G+4, Residential Building, Malir, Karachi
- ▶ Villas and Cattle Farms at various locations

# CONSULTANCY PROJECTS (PAK)

- ▶ Design, drawings and preparation of bidding documents of Pre- Engineered building for construction of new TLM workshop Sukkur
- ▶ Quetta Chaman housing Preliminary Planning including Road works pedestrian facility, under ground Electrical works, Plumbing Network, Gas Network Water Supply and Sewerage networks
- ▶ Vetting & Structural Assessment for Re-Strengthening design of Existing School Building B+G+2, Salam Foundation, Karachi
- ▶ Design of Auditorium Building Steel Structure
- ▶ Design of Season Five Banquet Hall
- ▶ BuiTems University Road Network Design and Estimation, Khuzdar, Baluchistan
- ▶ Oil & Gas foundation Structures
- ▶ Equipment Foundations

# CONSULTANCY PROJECTS (PAK)

- ▶ **Consultancy Services for Design Review, Detailed Design Drawing for the scheme Dualization of Tando Allahyar to Tando Adam**

# SUB CONSULTANCY PROJECTS (UAE & OMAN)

- ▶ Design Works(Overall Grading, Parking Road and parking Pavement, Signage & Markings, Highway and local road connection, Drainage) for Vegetable and Fruit market Liwa, Oman (Under MOI Oman)
- ▶ Specification document for infrastructure construction works of **Discovery Dunes Dubai , UAE**



## **WORK IN HAND (PAK)**

- ▶ **Design Services as Sub Consultants for Construction Supervision of Inter-provincial Connectivity Economic Corridor through Gilgit - Baltistan & AJ&K. Total Length 121 km, 20 Bridges. Scope of Work includes Road Design & Allied components i.e., Bridges, Culverts, Open Tunnels, Avalanche Protection Structures, Causeways, Retaining walls, Side Drains, Cross drainage & Slope Protection Works**
- ▶ **Feasibility study And Detailed Design of Ring Road Quetta incl. Road facilities parallel to existing railway track starting from Dasht near Spezand up to khuclak & Link Road From Joint Road up to Koyla Phattak Via Pishin Stop including Dukani Baba and Sabzal road link**
- ▶ **Detail Design and Tender Document of Construction of Additional road from intersection of Qambrani / Hazar Ganji Link road (EAST side of Railway track) to Sibi road(WEST side of Railway track) and existing Mastung road(EAST side of Railway track)**
- ▶ **Structural Assessment for Settlement in existing Structure of Storage Building and Retrofitting/rehabilitation design, Sukkur**
- ▶ **Structural Assessment for Settlement in existing Building Yard of and Retrofitting/rehabilitation design, Larkana**

# Projects





**Project: Banglows**

**Location: Karachi**

**For: Private**





**Project: Burraq Restaurant**

**Location: Karachi**

**For: Oil & GAS**

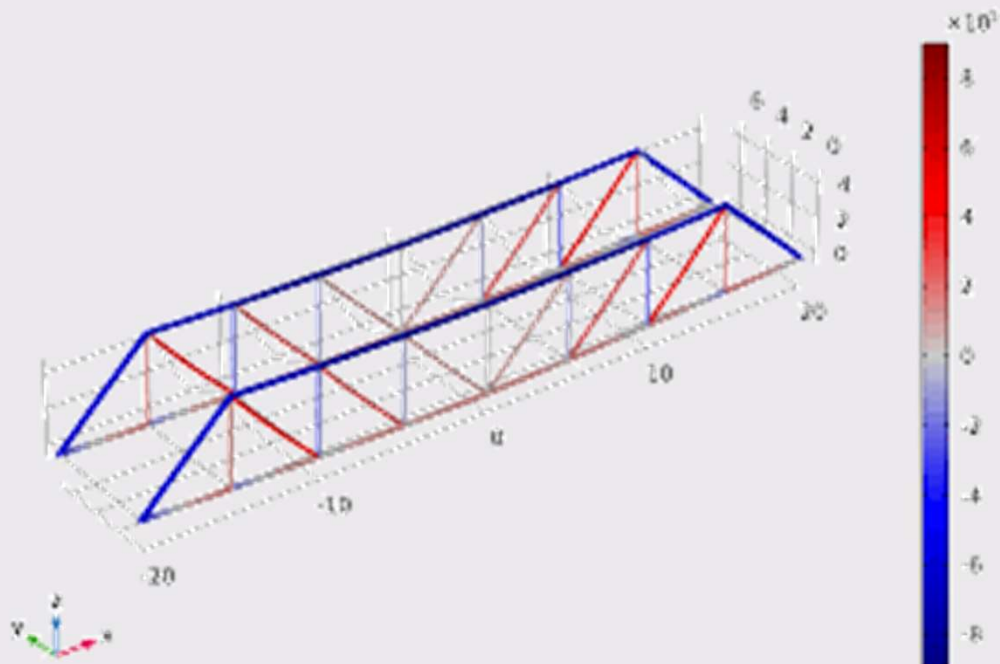


**Project: Burraq Mini Mart**

**Location: Karachi**

**For: Oil & GAS**

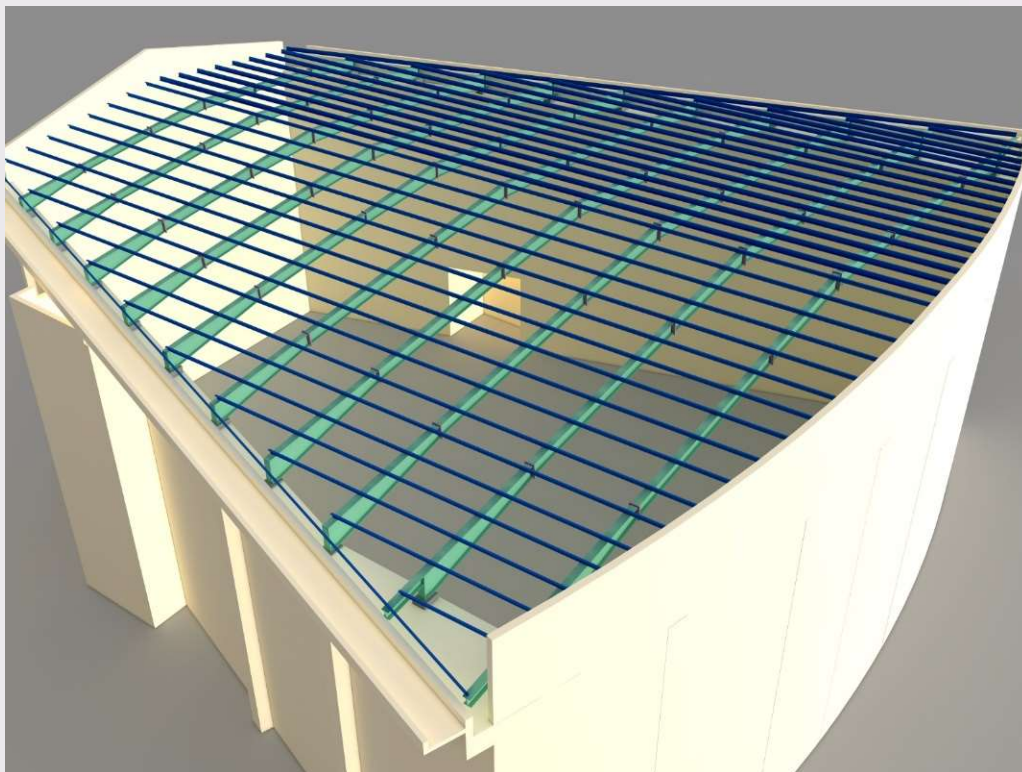
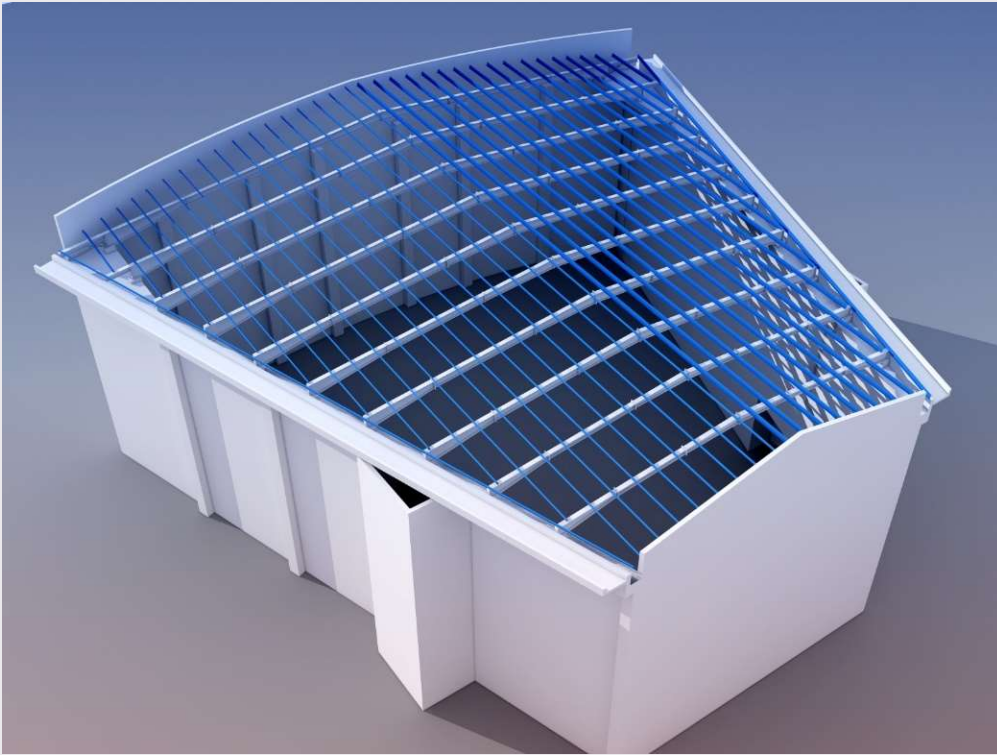




**Project:** Pipeline Crossings over Intake Chanel

**Location:** Port Qasim, Karachi

**For:** SSGC



***Auditorium Building Steel Structure Roof***  
Modelling in SAP2000  
(150 ft to 75 ft long, built-up Plate Girders)  
3-sided Slope



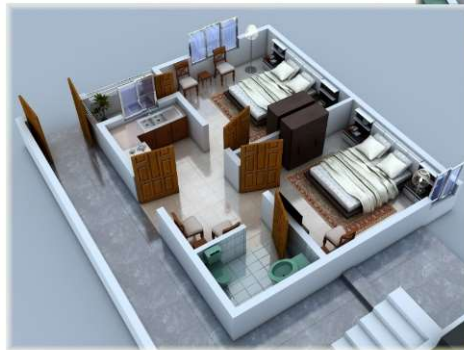


**Project:** Farhan Mobile Mall  
**Location:** Model Colony, Karachi  
**For:** A & F Designs



**APARTMENTS**

**QURESHI  
APARTMENTS**

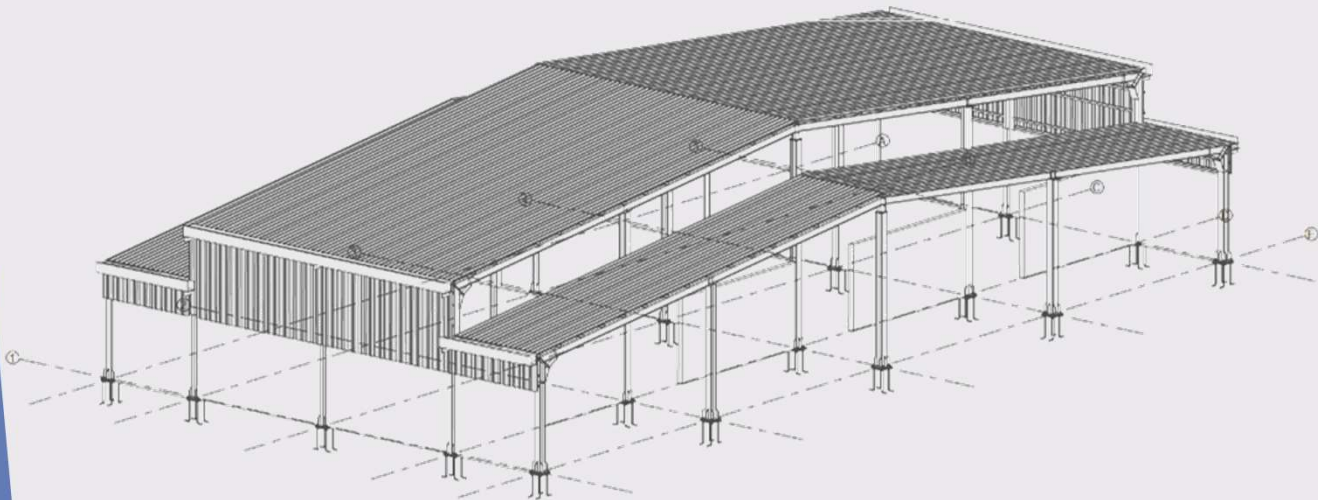
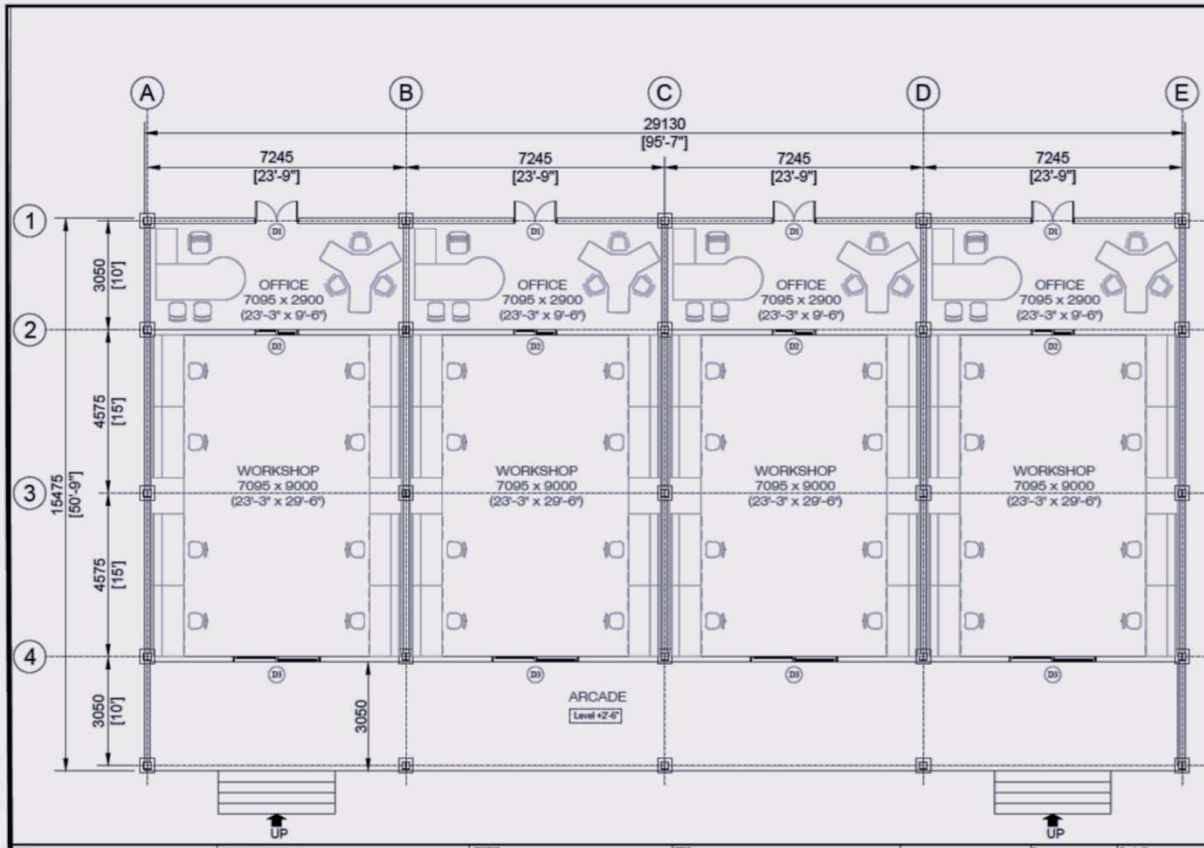


**Project: Qureshi Apartment Building**  
**Location: Malir, Karachi**  
**For: JR Real Estate**



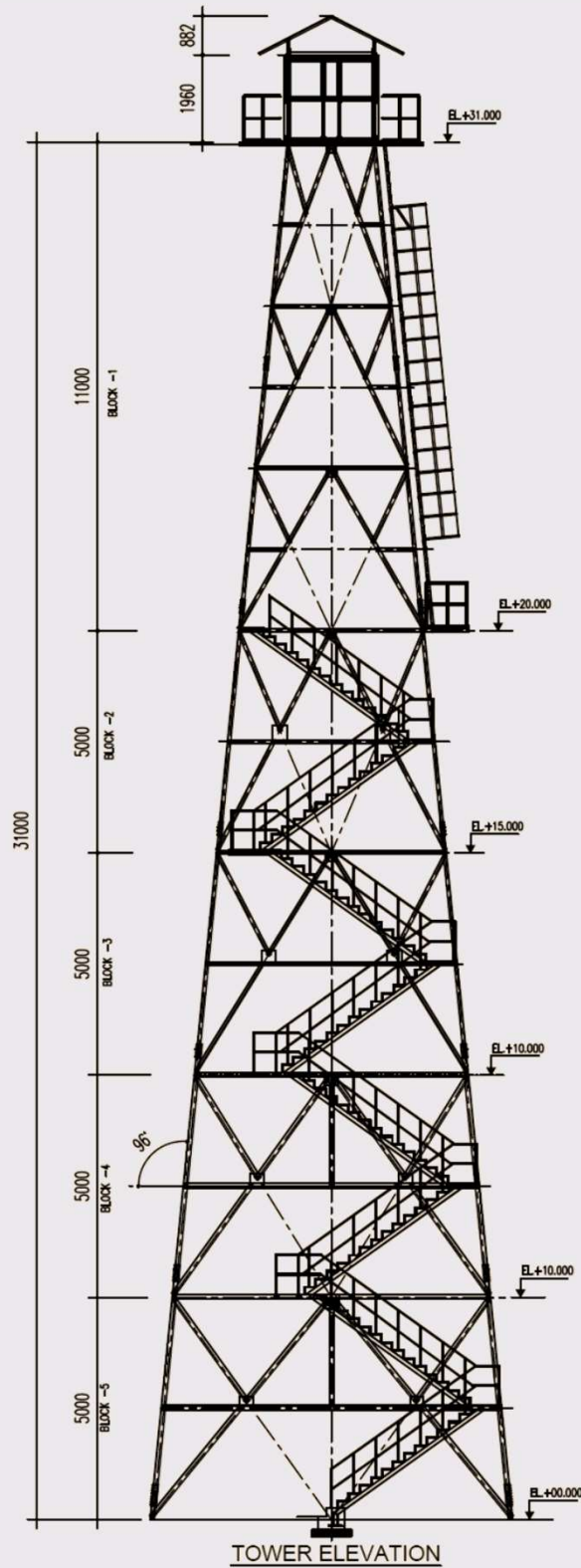
**Project:** Season Five Banquet Hall  
**Location:** Korangi No 5, Karachi  
**For:** JR Real Estate





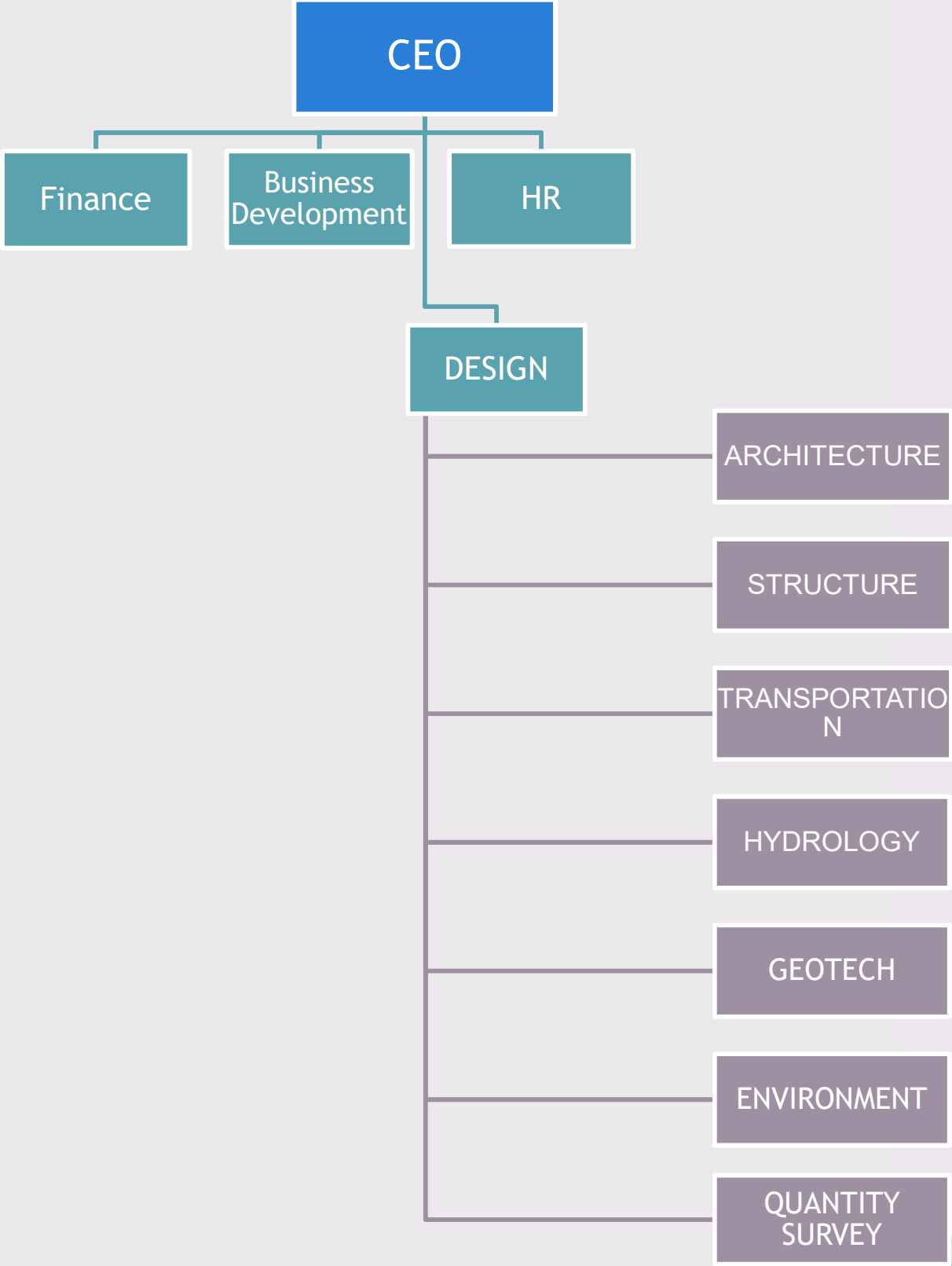
34

**Project: TLM Workshop Building**  
**Location: Schlumberger, Sukkur**  
**For: M/s Excellent Associates**



**Project:** Observation Post & Comm Tower  
**Location:** Islamabad  
**For:** Kestral Logistics

# Our Departments



# Registered With

- FEDERAL BOARD OF REVENUE (FBR)**
- PAKISTAN ENGINEERING COUNCIL (PEC)**
- DEFENSE HOUSING AUTHORITY (DHA) ISLAMABAD**
- SINDH REVENUE BOARD (SRB)**
- BALUCHISTAN REVENUE BOARD (BRA)**





**REGISTERED WITH PAKISTAN ENGINEERING COUNCIL**  
**Registration No. Consult/2433**

**Under following Project Profile Codes:**

1201(i)	Public Buildings & Offices
1201(ii)	Commercial Buildings & Offices
1201(iii)	Residential Buildings & houses
1201(vi)	Educational facilities & complexes
1201(vii)	Recreation and sports facilities, stadiums
1202(ii)	Industrial projects development and appraisal
1203(i)	Urban Developments, Housing Estates
1203(iii)	Urban Roads and Surfaces Drainage
1215(ii)	Highways, Bridges, Tunnels
1215(iii)	Transportation Systems Services
1217(ii)	Shipyards, Dockyards, Ship Breaking Yard
1217(iii)	Breakwaters
1235	Surveying, Valuation and Loss Assessment

**Under following Service Codes:**

0507	Topographic Surveys
0510	Planning Studies
0511	Feasibility Studies
0516	Technical Studies
0532	Structural Design
0533	Urban Design
0537	Engineering Design
0542	Design Review
0543	Quantity Surveying, Cost Estimating
0544	Estimation, Preparation of Contract Documents & Bid Evaluation
0546	Supervision/Inspection of Construction
0548	Project Management (Management on behalf of Owner)
0549	Technical Assistance and Advisory Services
0574	Factory rehabilitation
0575	Civil works rehabilitation
0592	Management Advisory Services
0593	Management Studies
0594	Organizational Development Studies
0596	Training And Transfer of Technology





## **Partnerships & Collaborations**

- ❑ **ALZAHIRAH INVESTMENT (TELECOM TOWERS), OMAN**
- ❑ **M/s REPUBLIC ENGINEERING CORPORATION (REC)**
- ❑ **ENGINEERING CONSULTANCY SERVICES PUNJAB (ECSP)**
- ❑ **ALSOROH DESIGN AND ENGINEERING CONSULTANCY, OMAN**
- ❑ **M/s PRIME ENGINEERING**
- ❑ **M/s CONCEPT DESIGN**
- ❑ **M/s A & F ARCHITECTS**

***WANT TO DISCUSS A PROJECT  
LET'S MEET.....***



## **CONTACT US AT**

**Head Office : B-192, CCHS, Gulshan Town,  
Scheme 33, Safora, Karachi.**

**Satellite Office: Suit # 230 , 2nd floor Rania Mall  
Bank Road Saddar Rawalpindi**

**Hafiz Sharjeel Aslam**

**M: +92 333 368 5816**

**Email address: [glaxconengrs@gmail.com](mailto:glaxconengrs@gmail.com)**